



AN ISO 9001:2015,
ISO 14001:2015
OHSAS 18001:2017,
& PED CERTIFIED CO.

G Great Steel & Metals

An ISO 9001:2015 Certified Co.



Better Quality in STEEL

PIPE

PIPE FITTINGS

FLANGES

INSTRUMENTATION





Great Steel & Metals

An ISO 9001:2015 Certified Co.

COMPANY PROFILE



We are 30 years old company engaged in making quality pipe fittings, flanges supplying & exporting all other ferrous & non ferrous products to the discerning customers in India & Abroad.

As markets today demand better performance, more reliability & higher quality. We have expanded to new areas on the map globally, offering a larger range of products & services than even before.

With a view in our mind of highlighting the products, it becomes necessary to dwell on various aspects of the products that we make and supply to various industries which are in continuous search of quality products.

Before introducing our products, we would like to answer the obvious question in your mind

Some of the unique values that comes along with products

- Commitment to complete customer satisfaction
- Complete product knowledge
- Total Quality management
- State of the art manufacturing & assembling facilities
- Excellent sourcing capability
- Competitive pricing
- Prompt & reliable customer service

QUALITY ASSURANCE

Every manufacturing phase is carried out with modern technique and is under the surveillance of our quality team that ensures all our products meet the national / international standards.

“NO COMPROMISE IN QUALITY” IS OUR MOTTO

Thus, main goal of **Great Steel & Metals** is high quality products. We have adopted quality analyst personnel to ensure complete satisfaction to our clients. As there is always a scope of betterment we are continually improving upon quality of products.

We have a stringent parameters set for the quality which are followed by all our employees. They see to it that the products are in accordance with the national / international standards.

From the time of procurement of raw material till the final delivery of the products, at every stage, our products are checked for various chemical and mechanical properties using the equipment certified by the Government and its agencies.



Great Steel & Metals

An ISO 9001:2015 Certified Co.

PIPES & TUBES



Stainless Steel : ASTM A312 TP 304/ 304L/ 304H/ 316/ 316L/ 317/ 317L/ 321/310/ 347/ 904L etc.

Carbon Steel : ASTM A53 GR. B/ A105 GR. / A106 GR. B/ API 5L GRADE B/ API 5L GR.X42/46/52/56/60/65/70, etc.

Low Temperature, Carbon Steel : A333 Gr.3/Gr.6 etc.

Alloy Steel : ASTM A335 GR. P1/ P5/ P9/ P11/ P22/ P91 etc.

High Nickel Alloys : Monel, Nickel, Inconel, Hastelloy, Titanium, Tantalum, Bismuth, Aluminium, High Speed Steel, Non Ferrous Metal : Copper, Brass, Bronze, Zinc, Lead etc.

Types : Round , Square, Rectangular.

Size : 1/4" NB to 32" NB (Seamless & Welded)
1/4" OD to 6" OD

Wall Thickness : Sch. 5S to Sch. XXS
22 SWG to 10 SWG

BUTT WELD FITTINGS

Stainless Steel: ASTM A403 WP 304/ 304L/ 304H/310S/ 310H/ 316/ 316L/ 317/ 317L/ 321/ 310/ 347/ 347H/ 904L etc.

Carbon Steel: ASTM A234 WPB / A420 WPL3/ A420 WPL6/ MSS-SP-75 WPHY 42/46/52 /56/60/65/70

Alloy Steel: ASTM A234 WP1/ WP5/ WP9/ WP11/ WP22/WP91 etc.

Others: Monel, Nickel, Inconel, Hastalloy, Copper, Brass, Bronze, Titanium, Tantalum, Bismuth, Aluminium, High Speed Steel, Zinc, Lead, etc.

Types: Elbow, Tee, Reducer, Return Bends, Stub-Ends, Cap, Collar, Cross, Insert etc.

Size: 1/4" NB TO 32" NB. (Seamless & Welded)



**SPECIALISE IN
DUPLEX & SUPER DUPLEX
FITTINGS**



Great Steel & Metals

An ISO 9001:2015 Certified Co.

FLANGES



SPECIALISE IN DUPLEX & SUPER DUPLEX FLANGES

Stainless Steel : ASTM A182 F304/ 304L/ 304H/ 316/ 316L/ 317/ 317L/ 321/ 310/ 347/904L/ Etc.

Carbon Steel : ASTM A105/ A694 F42/ 46/ 52/ 56/ 60/ 65/ 70/ A350 LF3/ A350 LF2, Etc.

Alloy Steel : ASTM A 182 F1/ F5/ F9/ F11/ F22/ F91/ Etc.

Duplex Steel : 2205 (Duplex), 2507 (Super Duplex)
UNS - 31803, 32750, 32990

Others : Monel, Nickel, Inconel, Hastelloy, Copper, Titanium, etc.

Types : Weldneck, Slipon, Blind, Socket Weld, Lap Joint, Spectacles, Ring Joint, Oriface, Long Weldneck, Etc.

Size : 1/8" NB TO 48" NB

Class : 150#, 300#, 400#, 600#, 900#, 1500# & 2500#. Also as per the National & International Standard.

FORGED FITTINGS

Stainless Steel : ASTM A182 F304/ 304L/ 304H/ 310S/ 310H/ 316/ 316L/316H/ 317/ 317L/ 321/321H/ 347/ 347H/ 904L etc.

Carbon Steel : ASTM A105 / A694 F42/46/ 52/56/ 60/ 65/70/ A350 LF2.

Alloy Steel : ASTM A182 F1/ F5/ F9/ F11/ F22/F91 etc.

Others : Monel, Nickel, Inconel, Hastelloy, Copper, etc.

Types : Elbow, Tee, Union, Cross, Coupling, Cap, Bushing, Plug, Swage Nipple, Welding Boss, Hexagon - Nipple, Barrel Nipple, Welding Nipple, Parraler - Nipple, Street Elbow, Hexagon Nut, Hose Nipple, Bend, Adapter, Insert, Weldolet, Elbowlet, Sockolet, Thredolet, Nipolet, Letrolet, etc.

Size : 1/4" NB TO 4" NB. (Socketweld & Threaded)

Class : 3000#, 6000#, 9000#.



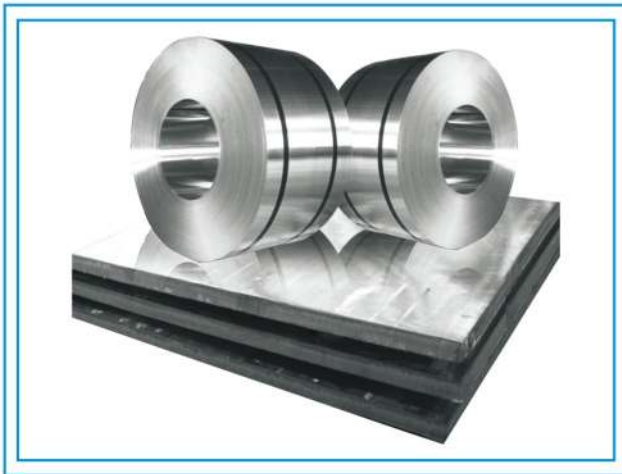
SPECIALISE IN DUPLEX & SUPER DUPLEX FORGED FITTINGS



Great Steel & Metals

An ISO 9001:2015 Certified Co.

SHEET, PLATE & COILS



S. S. Sheets & Plates as per ASTM A240, Gr. TP 304, 304L, 304LN, 309, 309S, 309H, 310H, 316, 316L, 316H, 316LN, 316Ti, 317, 317L, 321, 321H, 347, 348, 348H, 409, 410, 420, 430 etc.

Alloy Steel Plates : as per ASTM A387 Gr. 2, 5, 9, 11, 12 & 22 in class 1 & 2 ASTM A204 Gr. A & B, DIN 17175 Gr. 15Mo3 & 16Mo3 with IBR Test Certificate.

Carbon Steel / Boiler Quality Plates : as per IS 2062, Gr. A, B & C, IS 2002 Gr. 1 & 2 ASTM A516 Gr. 60 & 70, ASTM A 515 Gr. 70

Ferrule Fittings & Manifolds

Stainless Steel : ASTM A182 F304/ 304L/ 304H/ 316/ 316L/ 317/ 317L/ 321/310/ 347/ 904L etc.

Carbon Steel : ASTM A105 / A694 F42/46/ 52/56/ 60/ 65/70 / A350 LF3/ A350 LF2.

Alloy Steel : ASTM A182 F1/ F5/ F9/ F11/ F22/F91 etc.

Duplex & Super Duplex Steel : UNS S31803, UNS S32750, UNS S32760, 904L, Alloy 20

Other : Stainless Steel, Nickel Alloys, Carbon Steel, Alloy Steel, Monel, Nickel, Inconel, Hastelloy, Copper, Etc.

Types : Nipples, Adaptors, Crosses, Union Ball Joints, Reducing Bushing, Reducers, Pipe Caps, Couplings, Pipe Plug, Hollow Hex Plug, Elbow, Reducing Union, 90 Deg. Union Elbow, Reducing 90 Deg. Union Elbow Etc. Extender Leg 90 Deg. Union Elbow, 45 Deg. Union Elbow, Union Tee, Female Connector, Male Connector, Manifold Tee, Locator Union, Extended Run Leg Union Tee, Reducing Tee, Tribow, ATW Weld Ring, Tube Socket weld To Pipe Butt Weld, Tube Butt Weld To Tube Socket Weld, Port Connector, Etc.





AN ISO 9001:2015,
ISO 14001:2015
OHSAS 18001:2017,
& PED CERTIFIED CO.

PACKING & DISPATCH



G Great Steel & Metals

An ISO 9001:2015 Certified Co.

Manufacturers & Exporters of :

High Nickel Alloys, Stainless Steel, Alloys Steel, Carbon Steel, Other Ferrous & Non-Ferrous Metals
in Shape of : Sheet, Plate, Pipe, Pipe Fittings, Flanges, Fasteners, Round Bars, etc.

Ground Floor, B-6, Allahrakhia Bldg.,
9th Khetwadi Lane, Girgaon,
Mumbai - 400 004.

Factory Address :
Unit No.31, ANZ
Industrial Estate,
Golani Naka, Vasai (E).

Tel. : +91 022 2386 8818
 : +91 022 2385 4314
Fax : +91 022 2385 0329
WhatsApp : +91 98209 44410

Email : mehta@greatmetal.com
 : export@greatmetal.com