

ALFLAAH SEALS PRIVATE LIMITED

**CHEMICAL & FERTILIZER
POWER GENERATION
FOOD & PHARMA
AGITATORS
BLOWERS**

**PETROCHEMICALS
OIL & GAS REFINERIES
PUMPS
COMPRESSORS
ROTARY APPLICATION**

PTFE , FEP BUSH

PERFLURO ELASTOMERS (High Temperature & Low Temperature Rubber O Ring)

INDUSTRIAL MAGNETIVE DRIVE PUMP & ALL SPARES





ALFLAAH SEALS is a leading manufacturer and supplier of a wide and increasing range of elastomeric seals & sealing elements and various rubber products having the requisite capacity to cater to the requirements of a vast clientele . Today Alflaah Seals Supplying Indian Customers & overseas too .

ALFLAAH SEALS has been catering services to Chemical, Petrochemical, Agrochemical, Fertilizers, Pharmaceuticals Industries & refineries and many other industries.

Our products perform & live up to their name. In over three decades of successful service to the industry, we have gained an indisputable reputation of high quality and consistency and above all a solid reputation for integrity and responsibility. We have attained total customer confidence by continuously providing top quality products & ensuring positive growth of our company.

Product Range:

We have the wide range of products in mechanical seals which are highly efficient for all types of Centrifugal pumps, Compressors, Agitators, Reactors and Mixers etc. We also have the Equivalent Range of complete mechanical seals and spares for the various design like John Crane, EagleBurgmann, Flowserve, Flexi Box and Leakproof etc.

Quality:

We use best quality raw materials purchasing from India and importing from different suppliers around the world to ensure best life for our products. We actively pursuing the quality improvements through programs that enable each employee to do their job right the first time and every time. Our each product undergoes Pressure and Leak test before delivering it to our customers.

Commitment:

We are commied to serve our customers and meet their needs and expectaons by performing the task consistent and accurate way.



Rubber Bellow seal Type- 01AS

Single Acting, Independent of Direction of Rotation

Face Materials	Silicon Carbide, Carbon, TC, Ceramic
Metal Parts	SS 316, SS 304
Seal Elastomer	Nitrile, Viton, EPDM, NBR
Applications	Water Pumps, Submersible Pumps, Sewage pump
Operating Limits	Shaft Diameter d1 :10....100mm Pressure p : 10 bar (max) temperature : -20....+180°C Speed: 3000 r.p.m

Rubber Bellow seal Type- 02AS

Single Acting, Independent of Direction of Rotation

Face Materials	Carbon / Lecrolloy, Ceramic, Silicon Carbide
Metal Parts	SS 316, SS 304
Seal Elastomer	Nitrile, Viton
Applications	Water Pumps, Submersible Pumps
Operating Limits	Shaft Diameter d1 :12....100mm Pressure p : 08 bar (max) temperature : -20....+180°C Speed: 3000 r.p.m



Conical Coil Single Spring seal Type- 03AS

Single Acting, Independent of Direction of Rotation

Face Materials	Carbon, Ceramic, Tungsten Carbide, Silicon Carbide, Lecrolloy
Metal Parts	SS 316, SS 304
Seal Elastomer	Viton, EPDM, Silicon, Aflas, PTFE, GFT, Karlez, FEP, TTV
Applications	Water Pumps, Circulation Pumps for Central heating Chemical Process Pumps, Sewage & Submersible Pumps
Operating Limits	Shaft Diameter d1 :12....90mm Pressure p : 08 bar (max) temperature : -20....+180°C Speed: 3000 r.p.m



Singal Coil Spring seal Type- 04AS

Single Acting, Independent of Direction of Rotation



Face Materials	Carbon, Ceramic, Tungsten Carbide, Silicon Carbide, Lecrolloy
Metal Parts	SS 316, SS 304
Seal Elastomer	Viton, EPDM, Silicon, Aflas, GFT, Karlez, FEP, TTV, PTFE
Applications	Crystallizing Slurry, Suspended Solids Slurry, Saturated Chemical Slurry, General Chemical Slurry
Operating Limits	Shaft Diameter d1 :12....100mm Pressure p : 12 bar (max) temperature : -20....+180°C Speed: 3000 r.p.m

Multi Spring seal Type- 05AS

Single Acting, Independent of Direction of Rotation

Face Materials	Carbon, Ceramic, Silicon Carbide, Tungsten Carbide
Metal Parts	SS 316, SS 304
Seal Elastomer	Viton, EPDM, Silicon, Aflas, PTFE, GFT, Karlez, FEP, TTV
Applications	Crystallizing Slurry, Suspended Solids Slurry, Saturated Chemical Slurry, General Chemicals Slurry, All Solvent
Operating Limits	Shaft Diameter d1 :20....100mm Pressure p : 20 bar (max) temperature : +180°C Speed: 3000 r.p.m



PTFE Bellow seal Type- 06AS

Single Acting, Independent of Direction of Rotation



Face Materials	GFT / Ceramic, Silicon Carbide / Silicon Carbide, Silicon Carbide / Ceramic, Carbon / Ceramic
Metal Parts Spring	SS 316, SS 304, Hastelloy – C, Alloy 20 Hastelloy – C
Seal Elastomer	PTFE Bellows
Applications	Extremely Corrosive Services
Operating Limits	Shaft Diameter d1 :18....100mm Pressure p : 06 bar (max) temperature : -30....+120°C Speed: 3000 r.p.m



PTFE Bellow With Replaceable face Type- 07AS

Single Acting, Independent of Direction of Rotation

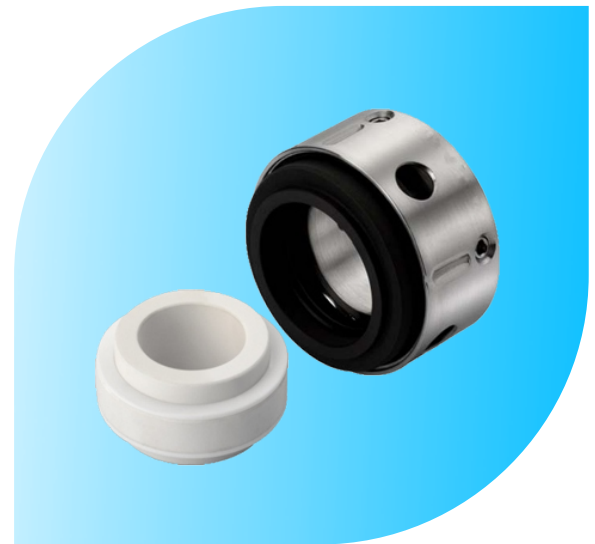


Face Materials	GFT / Ceramic, Silicon Carbide / Silicon Carbide, Silicon Carbide / Ceramic, Carbon / Ceramic
Metal Parts	SS 316, SS 304, Hastelloy – C, Alloy 20
Seal Elastomer	PTFE and GFT
Applications	Extremely Corrosive Services
Operating Limits	Shaft Diameter d1 :18....100mm Pressure p : 20 bar (max) temperature : -20....+260°C Speed: 3000 r.p.m

Reverse Balance Multi Spring Seal Type- 08AS

Single Acting, Independent of Direction of Rotation

Face Materials	Carbon, Ceramic, Tungsten Carbide, Silicon Carbide
Metal Parts	SS 316, SS 304, Hastelloy – C, Alloy 20
Seal Elastomer	Viton, EPDM, TTV, FEP and FFKM
Applications	Petrochemicals, Petroleum Refineries, General Chemicals, Light Hydrocarbons
Operating Limits	Shaft Diameter d1 :16....70mm Pressure p : 08 bar (max) temperature : +120°C Speed: 3000 r.p.m



Metal Bellow seal Type- 09AS

Single Acting, Independent of Direction of Rotation



Face Materials	Carbon / Silicon Carbide, Carbon / Tungsten Carbide, Silicon Carbide / Tungsten Carbide
Metal Parts	SS 316, SS 304, carpenter 42
Seal Elastomer	Hast- C, Am350, Inconel
Applications	Chemicals, Petrochemical, Refinery, Corrosive Chemical
Operating Limits	Shaft Diameter d1 :25....100mm Pressure p : 25 bar (max) temperature : -70....+350°C Speed: 3000 r.p.m



Grundfos seal Type- 10AS

Single Acting, Independent of Direction of Rotation



Face Materials	Carbon, Ceramic, Silicon Carbide, Tungsten Carbide
Metal Parts	SS 316, SS 304
Seal Elastomer	Viton, EPDM, Nitrile
Applications	Slurry pump, Pulp & paper, Sludge & Syrup pump, Chemical, Petrochemical & Refinery
Operating Limits	Shaft Diameter d1 :12....22mm Pressure p : 05 bar (max) temperature : -45....+180°C

Single Spring Seal Type- 11AS

Single Acting, Independent of Direction of Rotation

Face Materials	Carbon, Ceramic, Tungsten Carbide, Silicon Carbide
Metal Parts	SS 316, SS 304
Seal Elastomer	Viton, EPDM, Silicon, Aflas, PTFE, GFT, Karlez, FEP, TTV
Applications	Petrochemicals, Petroleum Refineries, General Chemicals, Light Hydrocarbons
Operating Limits	Shaft Diameter d1 :10....100mm Pressure p : 08 bar (max) temperature : -20.....200°C Speed: 3000 r.p.m



Reverse Balance Multi spring seal Type- 12AS

Single Acting, Independent of Direction of Rotation

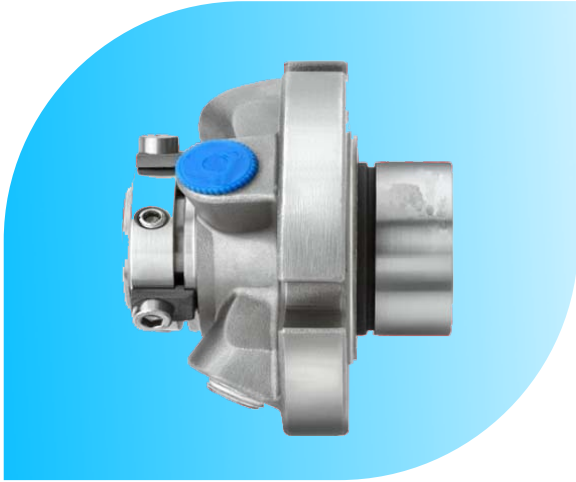


Face Materials	Carbon, Ceramic, Silicon Carbide,
Metal Parts	SS 316, SS 304, Hastolly- C and Alloy 20
Seal Elastomer	Viton, EPDM, TTV, FEP and FKM
Applications	Slurry pump, Pulp & paper, Sludge & Syrup pump, Chemical, Petrochemical & Refinery
Operating Limits	Shaft Diameter d1 :12....70mm Pressure p : 08 bar (max) temperature Upto....+120°C Speed: 3000 r.p.m



Single Cartridge Seal Type- 13AS

Single Acting, Independent of Direction of Rotation

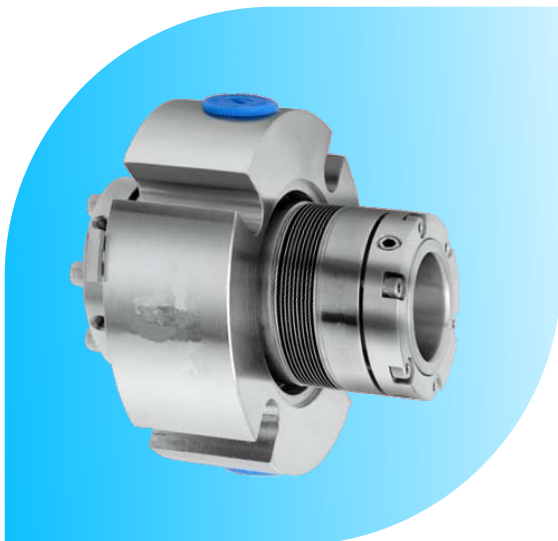


Face Materials	Carbon, Tungsten Carbide, Silicon Carbide
Metal Parts	SS 316, SS 304
Seal Elastomer	Viton, EPDM, Silicon, Aflas, PTFE, GFT, Karlez, FEP, TTV
Applications	Slurry pump, Pulp & paper, Sludge & Syrup pump, Chemical, Petrochemical & Refinery
Operating Limits	Shaft Diameter d1 :18....100mm Pressure p : 5.....35 bar (max) temperature : -20.....+260°C Speed : 3000 r.p.m

Dual Cartridge Seal Type- 14AS

Single Acting, Independent of Direction of Rotation

Face Materials	Carbon, Silicon Carbide, Tungsten Carbide
Metal Parts	SS 316, SS 304
Seal Elastomer	Viton, EPDM, Silicon, Aflas, PTFE, GFT, Karlez, FEP, TTV
Applications	Slurry pump, Pulp & paper, Sludge & Syrup pump, Chemical, Petrochemical & Refinery
Operating Limits	Shaft Diameter d1 :18....100mm Pressure p : 05...35 bar (max) temperature : -20.....260°C Speed: 3000 r.p.m



Metal Bellow Cartridge Seal Type- 15AS

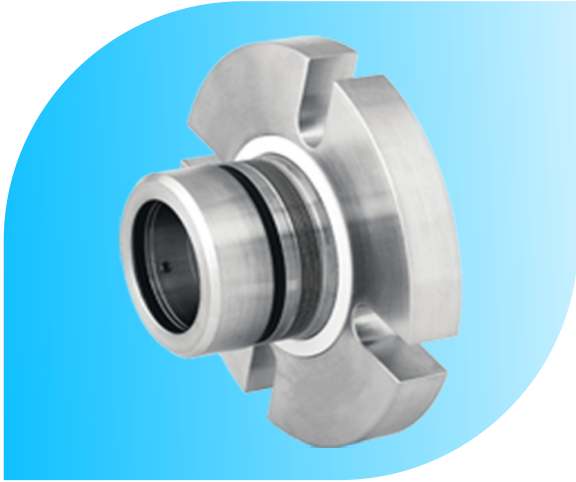
Single Acting, Independent of Direction of Rotation

Face Materials	Carbon, Tungsten Carbide, Silicon Carbide
Metal Parts	SS 316, SS 304
Seal Elastomer	Viton, EPDM, Silicon, Aflas, PTFE, GFT, Karlez, FEP, TTV
Applications	Slurry pump, Pulp & paper, Sludge & Syrup pump, Chemical, Petrochemical & Refinery
Operating Limits	Shaft Diameter d1 :18....100mm Pressure p : 05....35 bar (max) temperature : -20....+260°C Speed: 3000 r.p.m



Slurry Seal Type- 16AS

Single Acting, Independent of Direction of Rotation



Face Materials	Carbon, Silicon Carbide
Metal Parts	SS 316, SS 304
Seal Elastomer	Viton, EPDM, Silicon, Aflas, PTFE, GFT, Karlez, FEP, TTV
Applications	Slurry pump, Pulp & paper, Sludge & Syrup pump, Chemical, Petrochemical & Refinery
Operating Limits	Shaft Diameter d1 :18....100mm Pressure p : 5.....25 bar (max) temperature : -40.....+260°C Speed : 3000 r.p.m

Dry Running Seal Type- 17AS

For Top Entry Agitators, Vessels and Mixers
Single Acting, Independent of Direction of Rotation

Face Materials	Carbon , Silicon Carbide and Tungsten carbide
Metal Parts	SS 316, SS 304
Seal Elastomer	Viton, EPDM, Silicon, Aflas, PTFE, GFT, Karlez, FEP, TTV
Applications	Food Products, Pharmaceutical Products
Operating Limits	Shaft Diameter d1 :15....150mm Pressure p : 08 bar (max) temperature : -30.....150°C Speed: 3000 r.p.m



Dual Mechanical Seal Type- 18AS

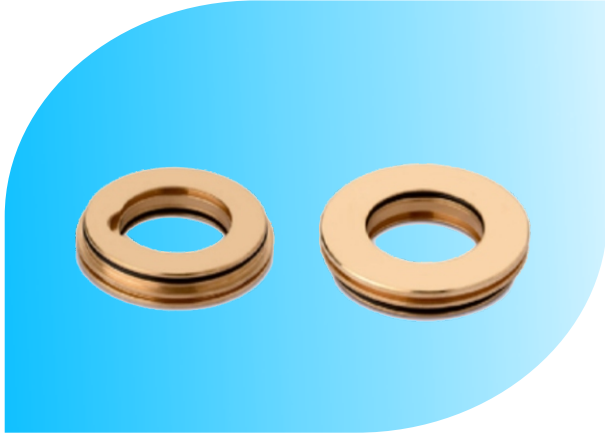
For Top Entry Agitators, Vessels and Mixers
Single Acting, Independent of Direction of Rotation



Face Materials	Carbon, Silicon Carbide, Tungsten Carbide
Metal Parts	SS 316, SS 304
Seal Elastomer	Viton, EPDM, Silicon, Aflas, PTFE, GFT, Karlez, FEP, TTV
Applications	Corrosive Chemical, General light Chemical, Food Products, Pharmaceutical Products
Operating Limits	Shaft Diameter d1 :25....200mm Pressure V.....30 bar (max) temperature : -30....+260°C Speed: 3000 r.p.m

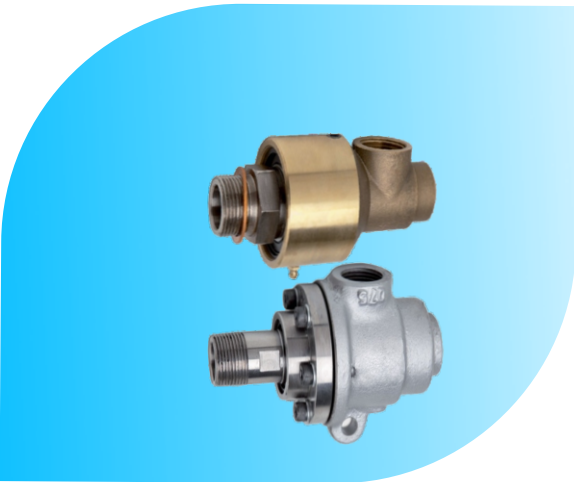


Bearing Isolator Type- 19AS Increasing Bearing Life



Metal Parts	Broze, SS 304
Elastomer	Viton, PTFE
Applications	Oil Mist, Grease, Oil Splash, Dry Lubrication, Non Flooded Condition
Operating Limits	Shaft Diameter d1 :22....200mm Temperature : 200°C Speed : 3000 r.p.m

Rotary Union Type- 20AS



Metal Parts	SS 304, SS316, Brass, Carbon Steel
Elastomer	Viton, EPDM, NBR
Applications	Oil, Water, Steam, Air, Coolant
Operating Limits	Shaft Diameter d1 :22....200mm Temperature : 120°C Speed : 3000 r.p.m straight thread 1/12" & 1 1/4" 3500 rpm 3/4" and below, 2500 rpm 1.0", 750 rpm 2.0"



Thermosyphon Vessel



Metal Parts	Thermosyphon Shell : Carbon Steel / SS 304 / SS 316 / MS Cooling Coil : SS 304 / SS 316
Operating Limits	20 Pressure Limit : 20 bar 40 Pressure Limit : 40 bar Temperature (max) : 200°C



Alflaah Seals Pvt. Ltd.
The Technological Leader

Office & Workshop Address:-

Gala No- 02, Mishra Compound, Rahat Nagar
Near Karanti Nagar, Behram baug Road,
Jogeshwari (west), Mumbai- 400102.

Contact No- +91 8425911289, 9576710019

Email I.D- aspl@alflaahseals.com